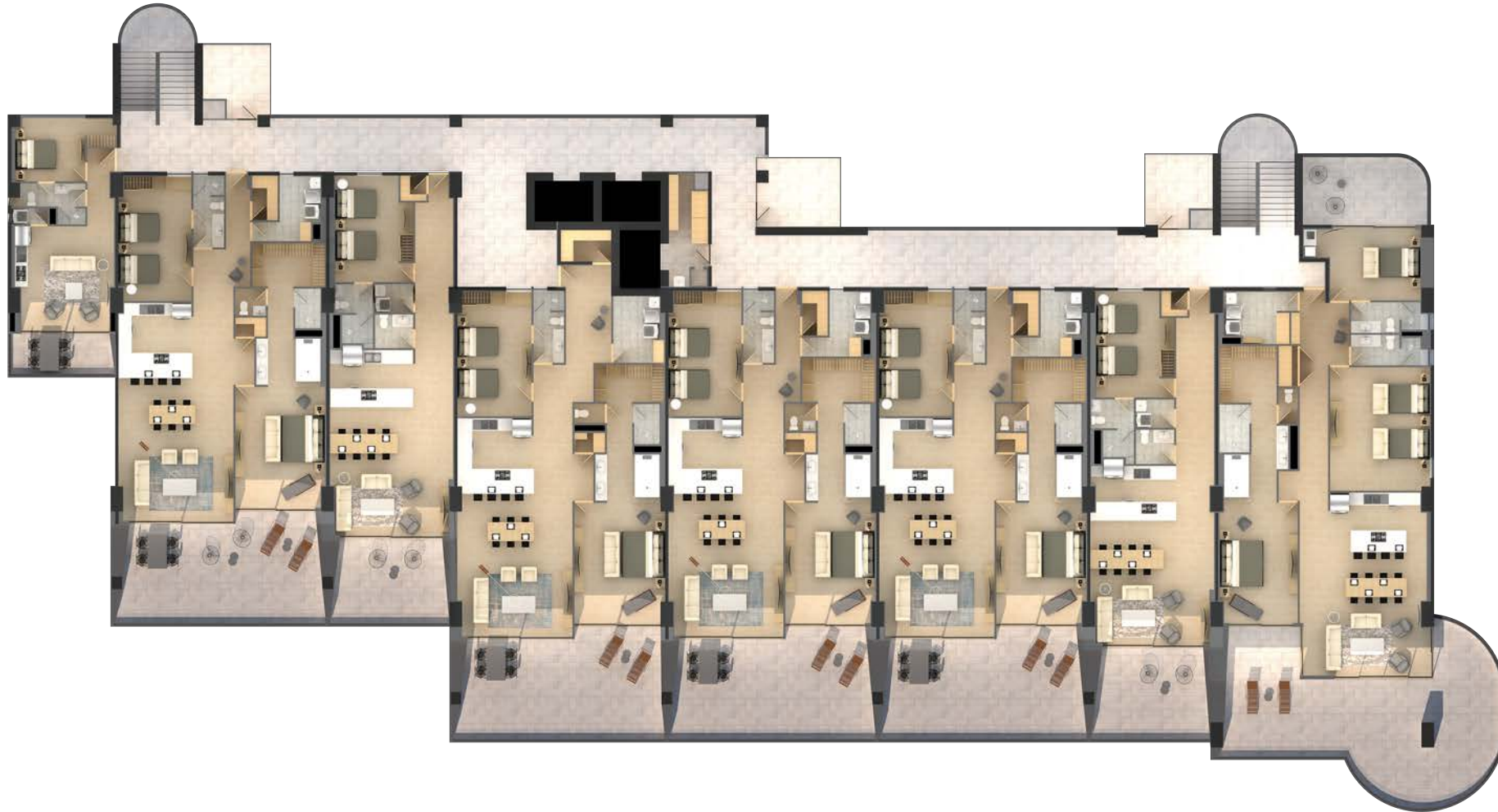
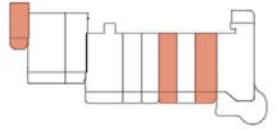


# FLOOR PLAN OVERVIEW



**ANTIGUA** - LAS PALOMAS PHASE 3, PUERTO PEÑASCO, SONORA



# ONE BEDROOM FLOOR PLANS



## FLOOR PLAN 1A

1075 ft<sup>2</sup> | 100 m<sup>2</sup>

One Bedroom floor plan, designed to accommodate two queen size beds. It includes a closet, desk, two bathrooms, laundry area, kitchen, living room, dining room & private terrace



## FLOOR PLAN 1B

876 ft<sup>2</sup> | 82 m<sup>2</sup>

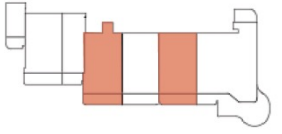
One Bedroom floor plan, designed to accommodate two queen size beds. It includes a closet, desk, two bathrooms, laundry area, kitchen, living room & private terrace.



## STUDIO

532 ft<sup>2</sup> | 50 m<sup>2</sup>

This floor plan is exclusive to the Antigua Building. It includes a bedroom, laundry area, bathroom, closet, living room & kitchen.



# TWO BEDROOM FLOOR PLANS



## FLOOR PLAN 2A

1855 ft<sup>2</sup> | 172 m<sup>2</sup>

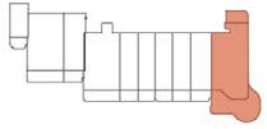
Two Bedroom floor plan, with one bedroom designed to accommodate two queen size beds. It includes two bathrooms, laundry area, 5 closets, living room, dining room, kitchen and private terrace.



## FLOOR PLAN 2B

1752 ft<sup>2</sup> | 163 m<sup>2</sup>

Two Bedroom floor plan, with one bedroom designed to accommodate two queen size beds. It includes two bathrooms, laundry area, 5 closets, living room, dining room, kitchen and private terrace.



# THREE BEDROOM FLOOR PLAN

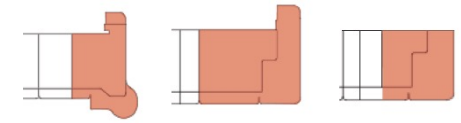


## FLOOR PLAN 3D

2158 ft<sup>2</sup> | 200 m<sup>2</sup>

Three Bedroom floor plan, designed with one bedroom as a lock-off suite, with bar, closet, private bathroom and private terrace; two more bedrooms, two bathrooms, 4 closets, laundry area, linen closet, living room, dining room, kitchen and terrace.





# PENTHOUSE FLOOR PLANS



## PH3 FLOOR PLAN

**3222 ft<sup>2</sup> | 299.33 m<sup>2</sup>**

Four Bedroom floor plan, designed with one bedroom as a lock-off suite, with bar, closet, private bathroom and private terrace; three additional bedrooms, three full bathrooms, a guest bathroom, laundry area, five closets, two living rooms, kitchen, dining room and private terrace



## PH4 FLOOR PLAN

**3196 ft<sup>2</sup> | 296 m<sup>2</sup>**

Four Bedroom floor plan, designed with one bedroom as a lock-off suite, with bar, closet, private bathroom and private terrace; three bathrooms, a guest bathroom, laundry area, five closets, two living rooms, kitchen, dining room and private terrace with bar and jacuzzi.



## PH5 FLOOR PLAN

**3131 ft<sup>2</sup> | 290.88 m<sup>2</sup>**

Two Bedroom floor plan, with one bedroom designed to accommodate two queen size beds. It includes two full bathrooms, laundry area, 5 closets, living room, kitchen and private terrace with bar and jacuzzi.